

Atmosphyre

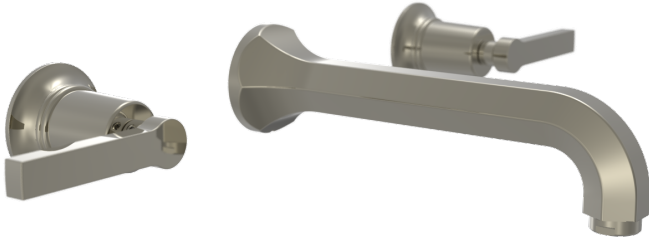
2706 New Scotland Road
Voorheesville, NY 12186
518-655-0126

Aged Brass Wall Tub Filer

www.atmosphyre.com
james@atmosphyre.com

TECHNICAL DETAILS

ADA Compliance: Yes
Drain Assembly Material: Brass
Access Hole Diameter: 1 1/8"
Number of Holes: Three Hole
Number of Handles: Two
Handle Turn Angle: Quarter Turn
Spout Reach: 8 1/4"
Installation Type: Wall Mounted
Primary Material: Brass
Valve Material: Ceramic
Flow Restriction: 1.2 gpm
Water Pressure Maximum: 85 PSI
Water Pressure Minimum: 20 PSI
Water Pressure Recommended: 60 PSI



CODES & STANDARDS

ASME A112.181/ CSA B1251, ASME 112.18.2/ CSA B125.2, ANSI NSF, CEC

WARRANTY

Mechanical Warranty: 10 Years from date of purchase.
Finish Warranty: See catalog for further information.

